

VILLAGE OF COVINGTON

Pavement Project Database

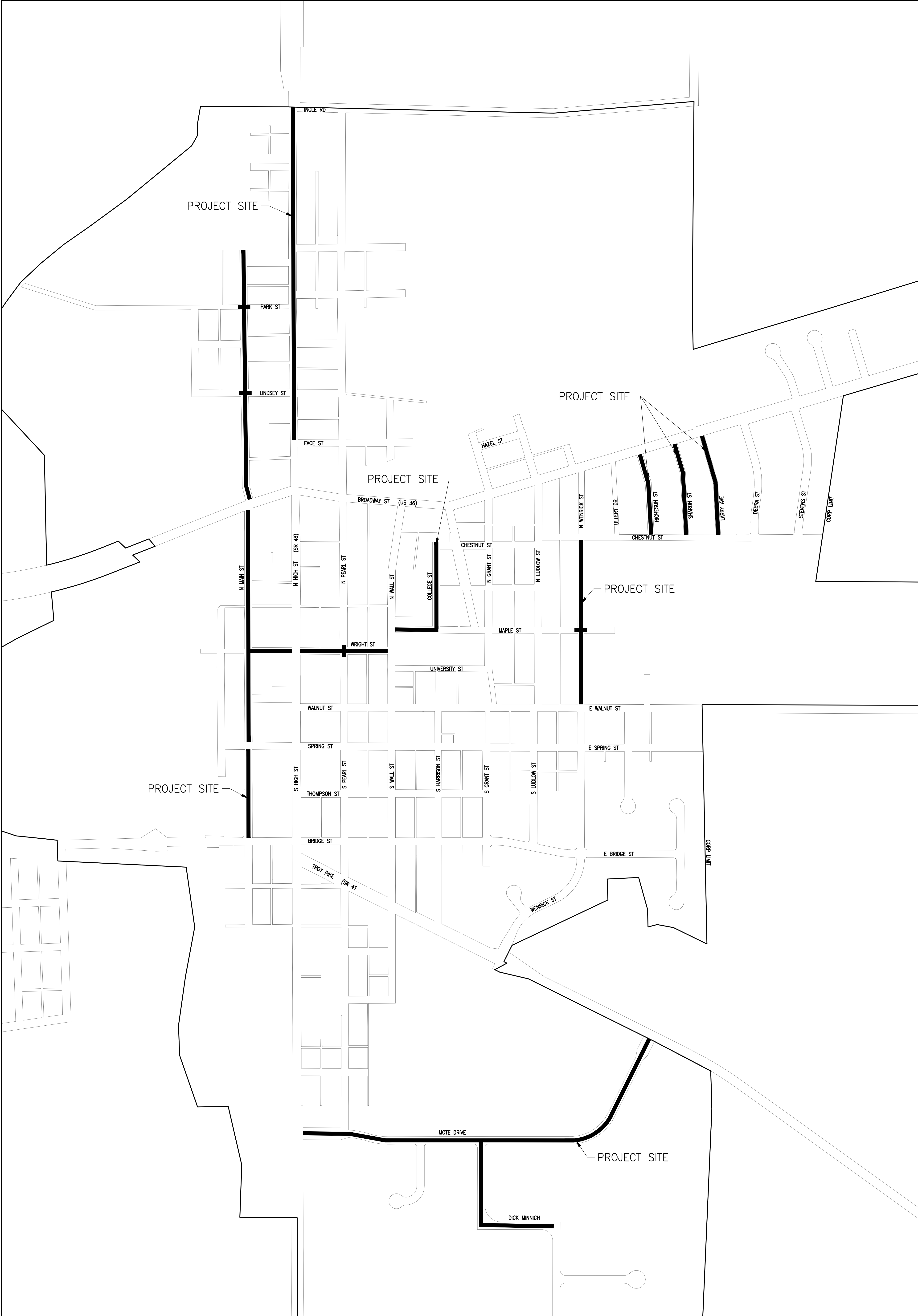
Completed Paving Projects								
Status	Year	Street Name	Location	Work Completed	Type of Overlay	Eng. Estimate	Cost	Misc. Notes
Complete	2011	Walnut	Ph. 1 to Grant Street	Full Depth Reconstruction		?	?	
Complete	2012	Walnut	Ph. 2 from Grant to East end	Full Depth Reconstruction		?	?	
Complete	2014	High Street	From Broadway to Troy Pike	Spot grind and patch 1 1/4"	1 1/4" overlay	?	?	
Complete	2015	Spring Street	High St. to the East end	Full Depth Reconstruction		\$ 2,247,505.00	\$ 2,190,587.57	Loans / Grants to Fund
Complete	2015	Face Street	Pearl St. east to dead end	Chip and seal. Patch soft spots		?	?	2015 Pavement Program
Complete	2015	Dick Minnich	From curve south to Industrial	Grind edge / chip and seal	1 1/4" overlay			
Complete	2015	Industrial	Entire Length	Grind edge / chip and seal	1 1/4" overlay			
Complete	2016	Steven Street	Entire Length	Grind edge / chip and seal	1 1/2" overlay	\$ 53,625.00	\$ 49,898.00	2016 Pavement Program
Complete	2016	Chestnut	Debra east to school lot	Grind edge / chip and seal	1 1/2" overlay			
Complete	2017	Debra	Chestnut to Broadway	Grind edge / chip and seal	1 1/2" overlay	\$ 116,250.00	\$ 101,406.50	2017 Pavement Program
Complete	2017	Chestnut	Debra west to Wenrick	Grind edge / chip and seal	1 1/2" overlay			
Complete	2017	Ullery	Chestnut to Broadway	Grind edge / chip and seal	1 1/2" overlay			
Complete	2019	Wenrick	Troy Pike to Spring St.	Grind edge / chip and seal	1 1/2" overlay	\$ 105,000.00	\$ 98,121.84	2019 Pavement Program
Complete	2019	ALLEY	Btw 36 and middle alley @ Wright St.	Grind edge / chip and seal	1 1/2" overlay			
Complete	2019	Brookston Ct.	Full cul-de-sac	Grind edge / chip and seal	1 1/2" overlay			
Complete	2020	N. Grant Street	University to E. Bridge Street	Grind edge / chip and seal	1 1/2" overlay	\$ 160,000.00	\$ 147,258.75	2020 Pavement Program
Complete	2020	ALLEY	Between Thompson & Bridge	Grind edge / chip and seal	1 1/2" overlay			
Complete	2020	Wenrick	E. Walnut to E. Bridge St.	Grind edge / chip and seal	1 1/2" overlay			
Complete	2021	Face Street	High St. to Peal St.	Grind edge / chip and seal	1 1/2" overlay	\$ 80,000.00	\$72,149	Includes 8' bikeway / curbs / sweet treats parking

Total Spent: \$ 2,659,421.66

Future Projects								
Status	Year	Street Name	Location	Work to be Completed	Type of Overlay	Eng. Estimate	Cost	Misc. Notes
Planned	2022	High Street	Dodds to Broadway	Full Depth Reconstruction		\$ 4,280,000.00		Includes curbs, lighting, sidewalks, etc.
Future	2023	Maple Street	Wall St. to Schoolhouse Park	Grind edge / chip and seal	1 1/2" overlay	\$ 40,000.00		2023 Pavement Program
Future	2023	College Street	Maple St. to Chestnut St.	Grind edge / chip and seal	1 1/2" overlay	\$ 55,000.00		
Future	2024	Wenrick	Walnut to Chestnut	Grind edge / chip and seal	1 1/2" overlay	\$ 110,000.00		2024 Pavement Program
Future	2025	Main Street	Bridge St. to Broadway St.	Grind edge / chip and seal	1 1/2" overlay	\$ 200,000.00		2025 Pavement Program
Future	2026	Main Street	Broadway St. to dead end north	Grind edge / chip and seal	1 1/2" overlay	\$ 180,000.00		2026 Pavement Program
Future	2027	Larry	Chestnut to Broadway	Grind edge / chip and seal	1 1/2" overlay	\$ 55,000.00		2027 Pavement Program
Future	2027	Richeson	Chestnut to Broadway	Grind edge / chip and seal	1 1/2" overlay	\$ 45,000.00		
Future	2027	Sharon	Chestnut to Broadway	Grind edge / chip and seal	1 1/2" overlay	\$ 50,000.00		
Future	2028	Mote Drive	High St. to Troy Pike	Grind edge / chip and seal	1 1/2" overlay	\$ 250,000.00		2028 Pavement Program
Future	2029	Dick Minnich	Mote Dr. to new pavement	Grind edge / chip and seal	1 1/2" overlay	\$ 90,000.00		2029 Pavement Program

Total Budget: \$ 5,355,000.00

Projects to be Completed as Soon as Matching Funds are Available								
Future	TBD	Wright Street	Pearl St. to Main St.	Grind edge / chip and seal	1 1/2" overlay	TBD		
Future	TBD	High Street	Face Street to Ingle Road	Grind edge / chip and seal	1 1/2" overlay	TBD		



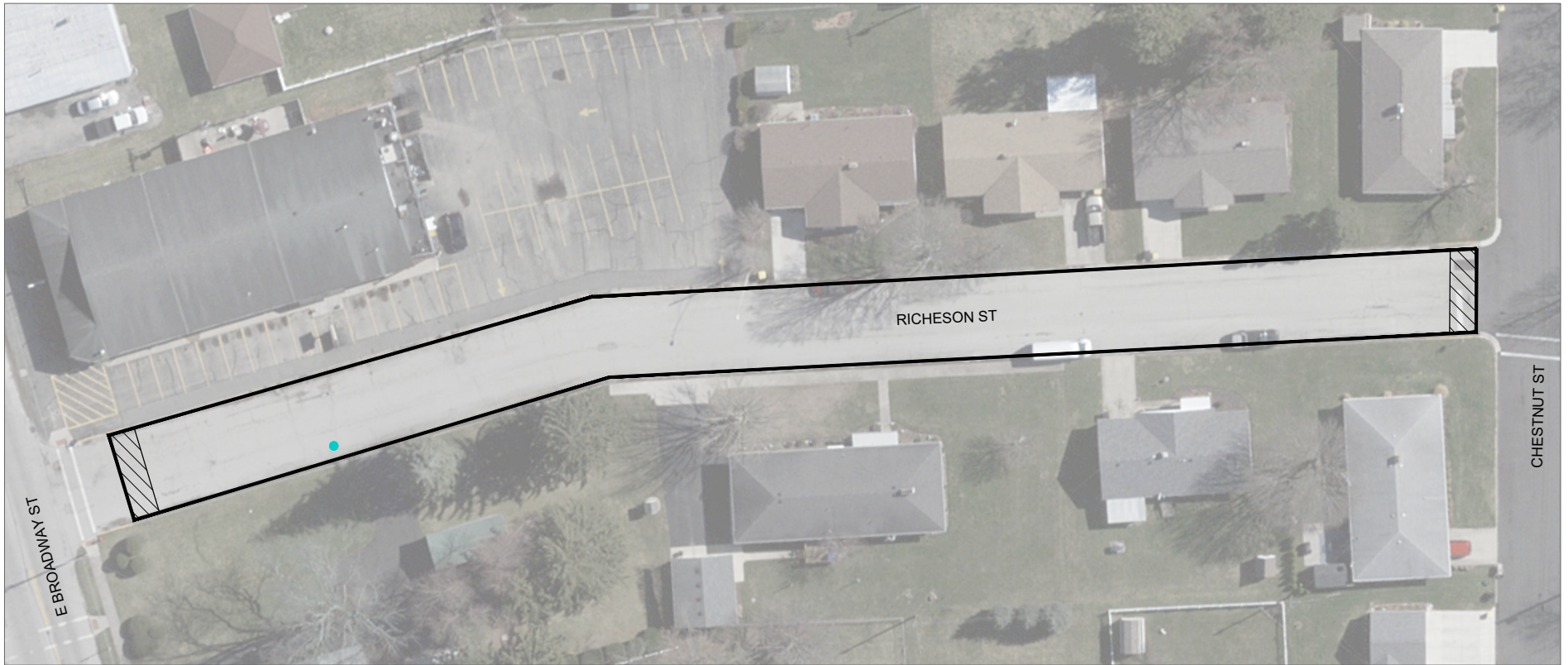
PROJECT LOCATION MAP

POTENTIAL COVINGTON STREET IMPROVEMENTS PROJECTS
VILLAGE OF COVINGTON



www.accessengllc.com | 419-586-1430



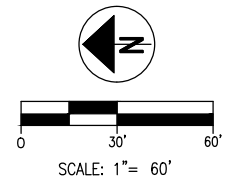


LEGEND

- | | |
|---|--|
| <ul style="list-style-type: none"> ● WATER VALVE TO BE ADJUSTED TO GRADE ● SANITARY MH CASTING TO BE REPLACED ● STORM MH TO BE ADJUSTED TO GRADE | <ul style="list-style-type: none"> MONUMENT BOX TO BE ADJUSTED TO GRADE RESURFACING LIMITS 10' WIDE BUTT JOINT |
|---|--|

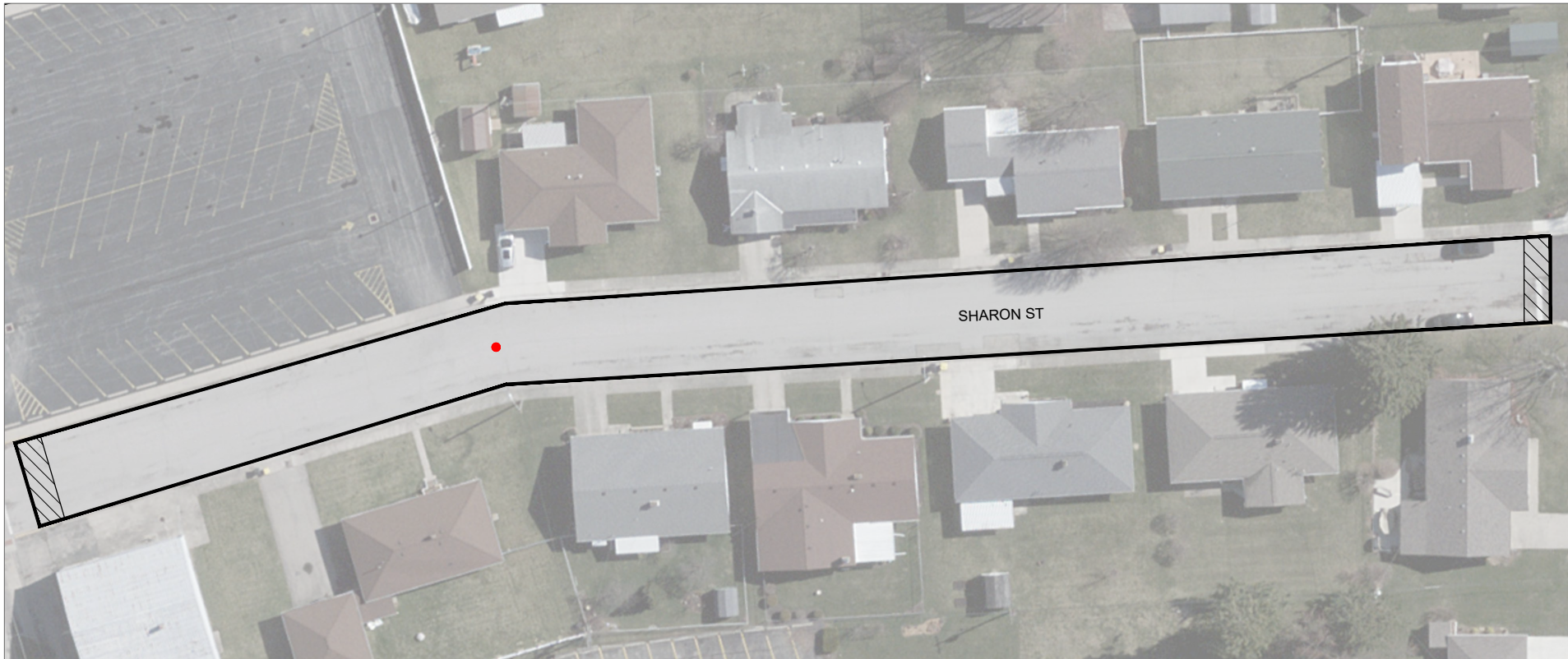
WORK DESCRIPTION

- 1 1/2" MILL AT GUTTER EDGE TO 0" AT 7' OFF THE GUTTER EDGE
- CHIP AND SEAL APPLICATION
- 1 1/2" ASPHALT OVERLAY



E BROADWAY ST

CHESTNUT ST



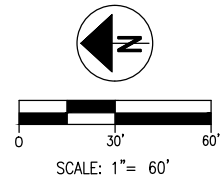
SHARON ST

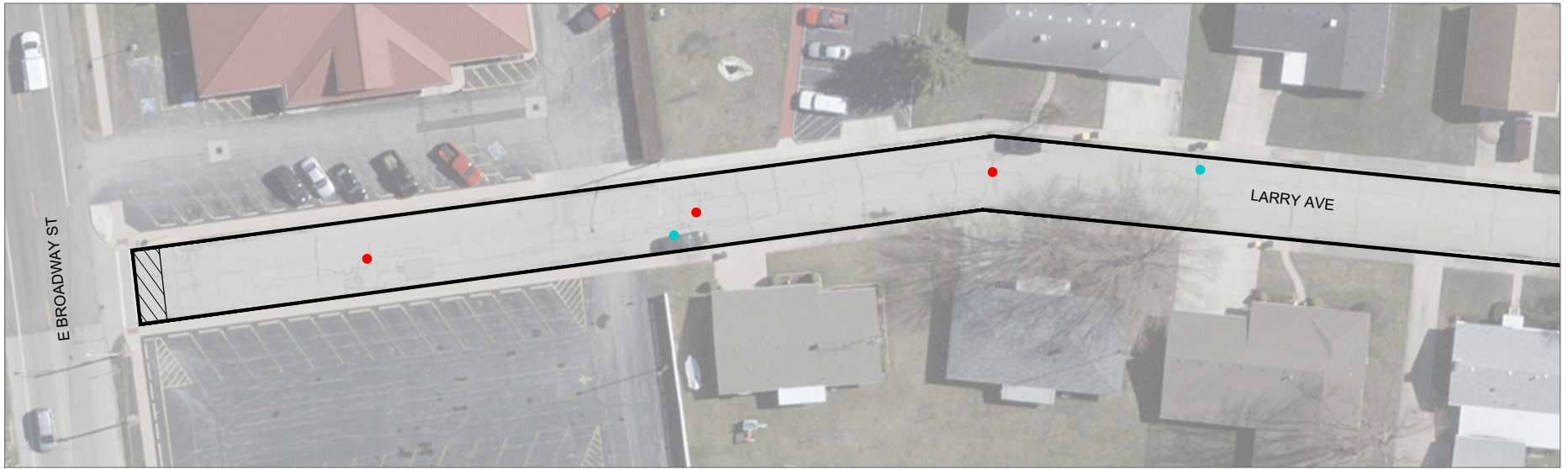
LEGEND

- WATER VALVE TO BE ADJUSTED TO GRADE
- SANITARY MH CASTING TO BE REPLACED
- STORM MH TO BE ADJUSTED TO GRADE
- MONUMENT BOX TO BE ADJUSTED TO GRADE
- RESURFACING LIMITS
- 10' WIDE BUTT JOINT

WORK DESCRIPTION

- 1 1/2" MILL AT GUTTER EDGE TO 0" AT 7' OFF THE GUTTER EDGE
- CHIP AND SEAL APPLICATION
- 1 1/2" ASPHALT OVERLAY



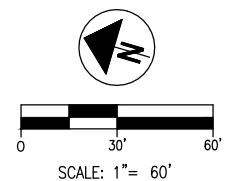


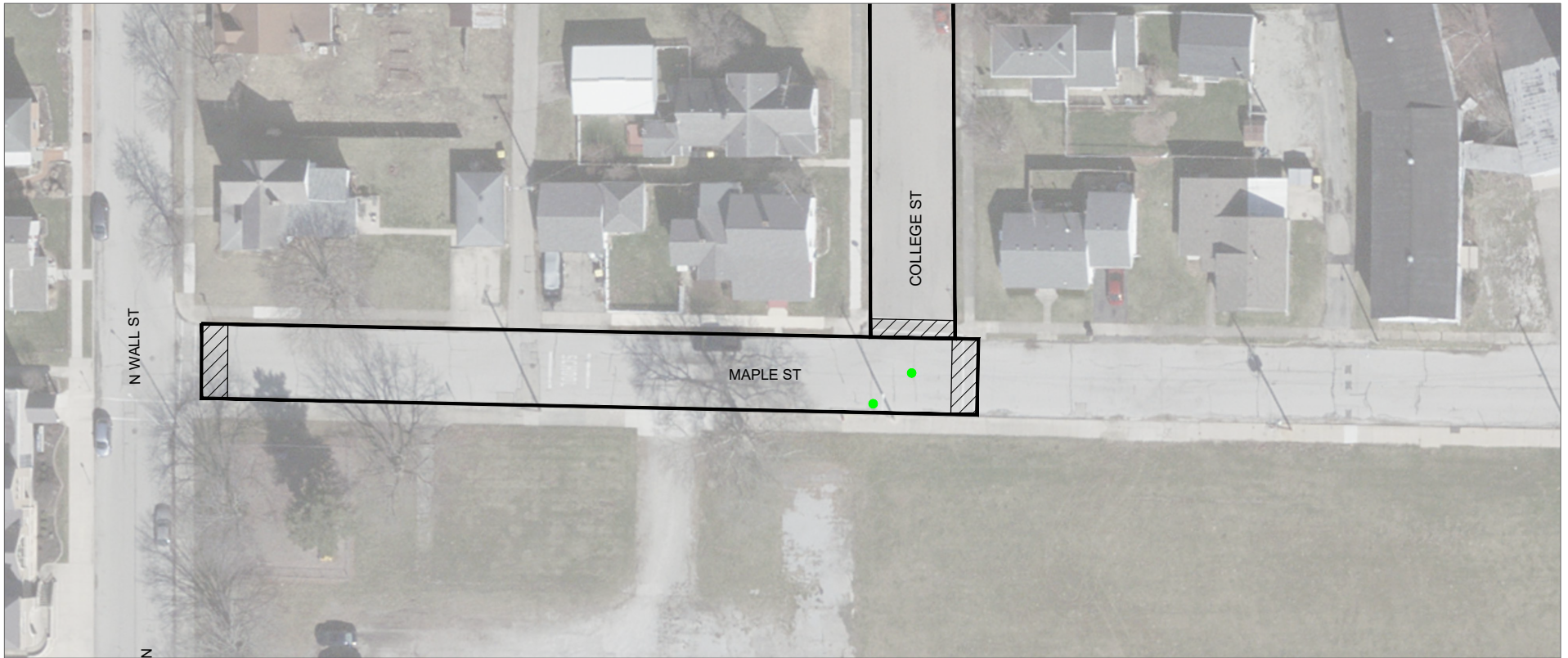
LEGEND

- WATER VALVE BOX TO BE REPLACED
- SANITARY MH CASTING TO BE REPLACED
- STORM MH TO BE ADJUSTED TO GRADE
- RESURFACING LIMITS
- 10' WIDE BUTT JOINT

WORK DESCRIPTION

- 1 1/2" MILL AT GUTTER EDGE TO 0" AT 7' OFF THE GUTTER EDGE
- CHIP AND SEAL APPLICATION
- 1 1/2" ASPHALT OVERLAY



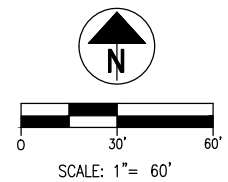


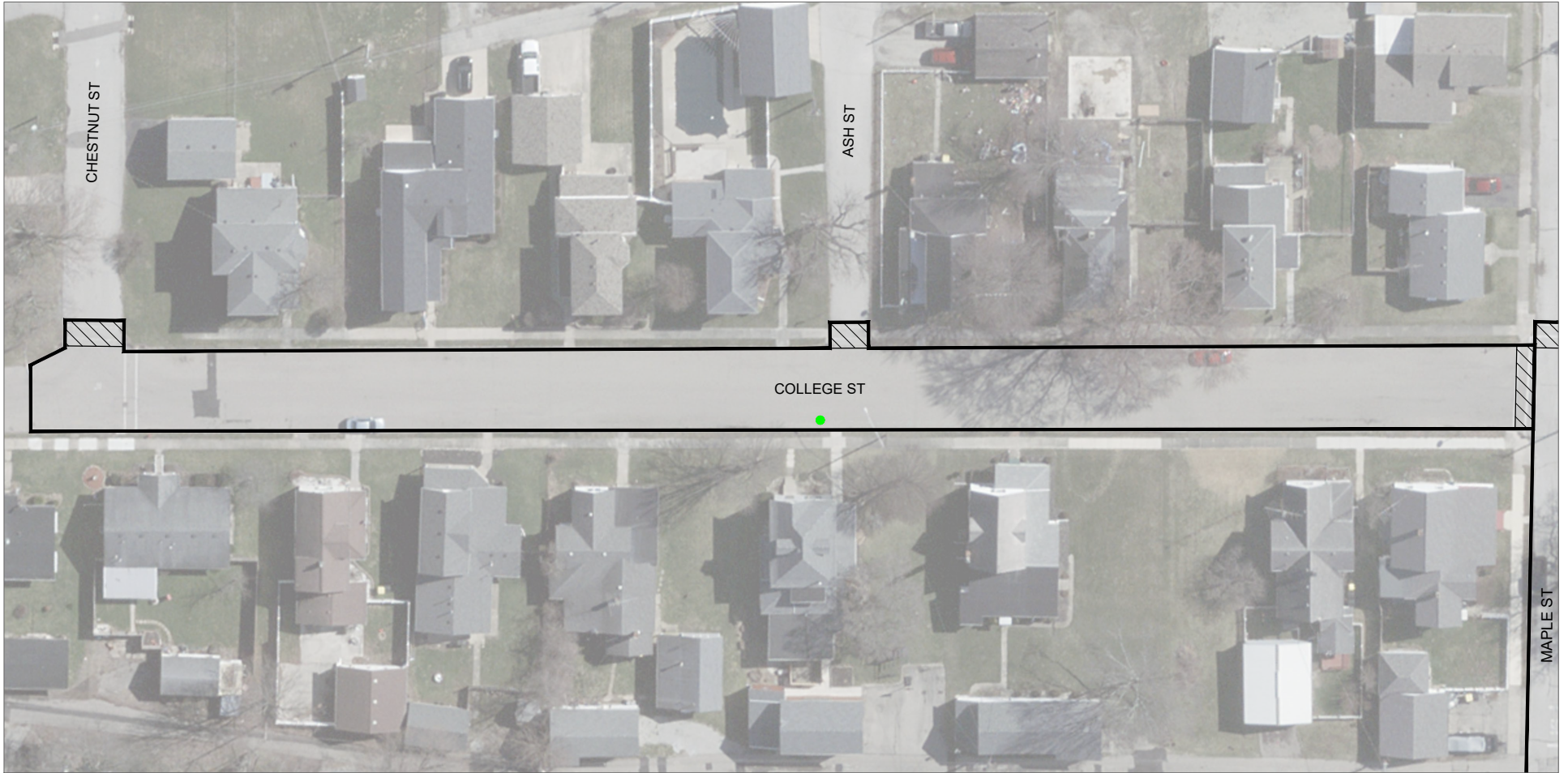
LEGEND

- | | | | |
|---|-------------------------------------|---|--------------------------------------|
| ● | WATER VALVE TO BE ADJUSTED TO GRADE | ■ | MONUMENT BOX TO BE ADJUSTED TO GRADE |
| ● | SANITARY MH CASTING TO BE REPLACED | — | RESURFACING LIMITS |
| ● | STORM MH TO BE ADJUSTED TO GRADE | ▨ | 10' WIDE BUTT JOINT |

WORK DESCRIPTION

- 1 1/2" FULL WIDTH PAVEMENT MILL
- CHIP AND SEAL APPLICATION
- 1 1/2" ASPHALT OVERLAY



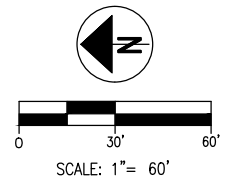


LEGEND

- WATER VALVE TO BE ADJUSTED TO GRADE
- SANITARY MH CASTING TO BE REPLACED
- STORM MH TO BE ADJUSTED TO GRADE
- MONUMENT BOX TO BE ADJUSTED TO GRADE
- RESURFACING LIMITS
- 10' WIDE BUTT JOINT

WORK DESCRIPTION

- 1 1/2" FULL WIDTH PAVEMENT MILL
- CHIP AND SEAL APPLICATION
- 1 1/2" ASPHALT OVERLAY



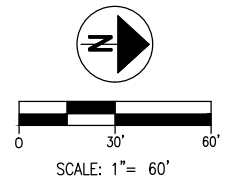


LEGEND

- | | | | |
|---|-------------------------------------|---|--------------------------------------|
| ● | WATER VALVE TO BE ADJUSTED TO GRADE | ■ | MONUMENT BOX TO BE ADJUSTED TO GRADE |
| ● | SANITARY MH CASTING TO BE REPLACED | — | RESURFACING LIMITS |
| ● | STORM MH TO BE ADJUSTED TO GRADE | ▨ | 10' WIDE BUTT JOINT |

WORK DESCRIPTION

- 1 1/2" MILL AT GUTTER EDGE TO 0" AT 7' OFF THE GUTTER EDGE
- CHIP AND SEAL APPLICATION
- 1 1/2" ASPHALT OVERLAY



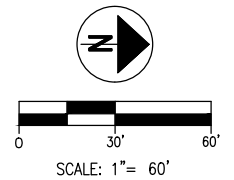


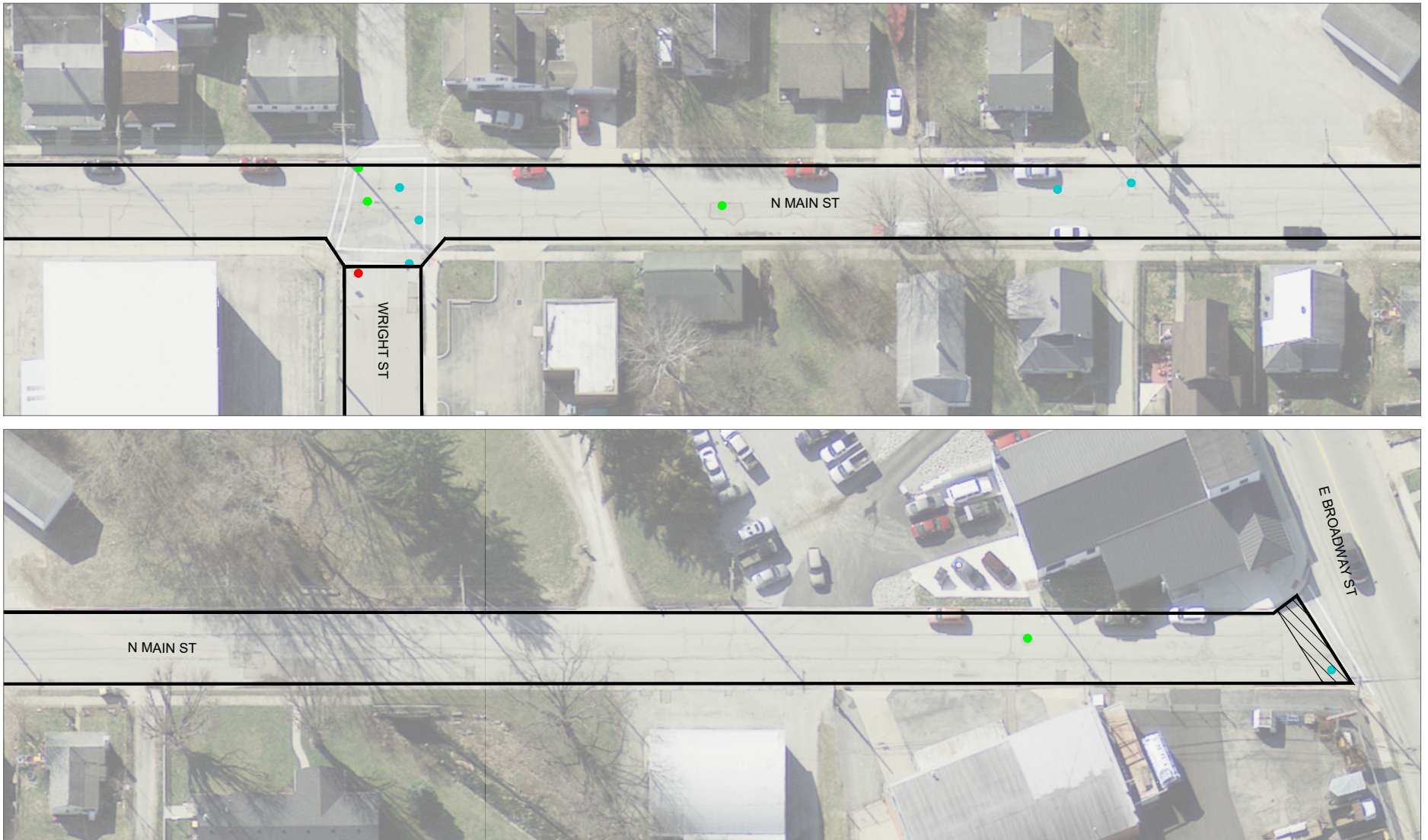
LEGEND

- WATER VALVE TO BE ADJUSTED TO GRADE
- SANITARY MH CASTING TO BE REPLACED
- STORM MH TO BE ADJUSTED TO GRADE
- MONUMENT BOX TO BE ADJUSTED TO GRADE
- RESURFACING LIMITS
- 10' WIDE BUTT JOINT

WORK DESCRIPTION

- 1 1/2" MILL AT GUTTER EDGE TO 0" AT 7' OFF THE GUTTER EDGE
- CHIP AND SEAL APPLICATION
- 1 1/2" ASPHALT OVERLAY



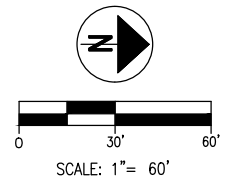


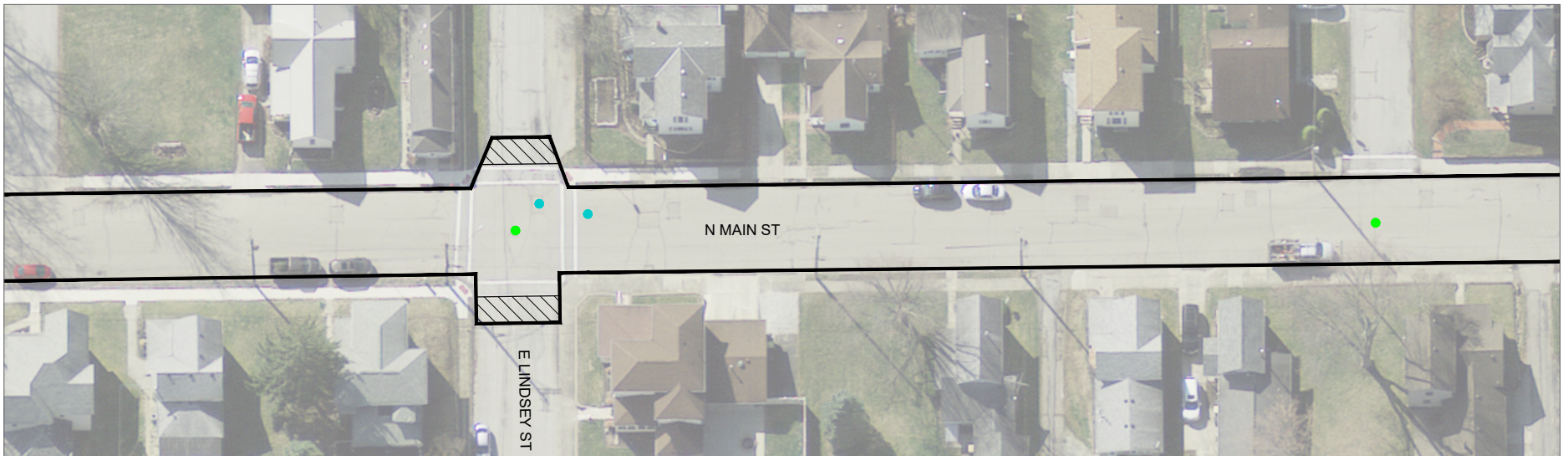
LEGEND

- | | |
|---|--|
| <ul style="list-style-type: none"> ● WATER VALVE TO BE ADJUSTED TO GRADE ● SANITARY MH CASTING TO BE REPLACED ● STORM MH TO BE ADJUSTED TO GRADE | <ul style="list-style-type: none"> MONUMENT BOX TO BE ADJUSTED TO GRADE RESURFACING LIMITS 10' WIDE BUTT JOINT |
|---|--|

WORK DESCRIPTION

- 1 1/2" MILL AT GUTTER EDGE TO 0" AT 7' OFF THE GUTTER EDGE
- CHIP AND SEAL APPLICATION
- 1 1/2" ASPHALT OVERLAY



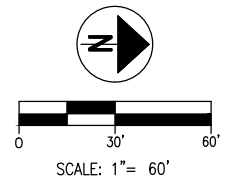


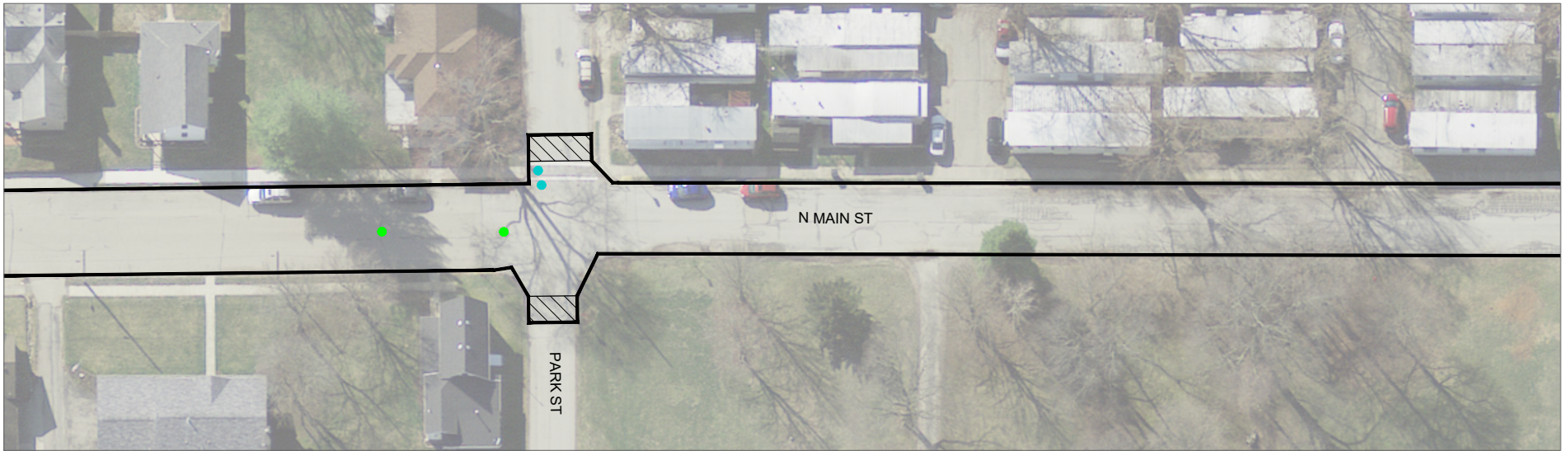
LEGEND

- WATER VALVE TO BE ADJUSTED TO GRADE
- SANITARY MH CASTING TO BE REPLACED
- STORM MH TO BE ADJUSTED TO GRADE
- MONUMENT BOX TO BE ADJUSTED TO GRADE
- RESURFACING LIMITS
- 10' WIDE BUTT JOINT

WORK DESCRIPTION

- 1 1/2" MILL AT GUTTER EDGE TO 0" AT 7' OFF THE GUTTER EDGE
- CHIP AND SEAL APPLICATION
- 1 1/2" ASPHALT OVERLAY



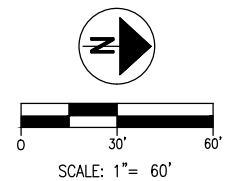


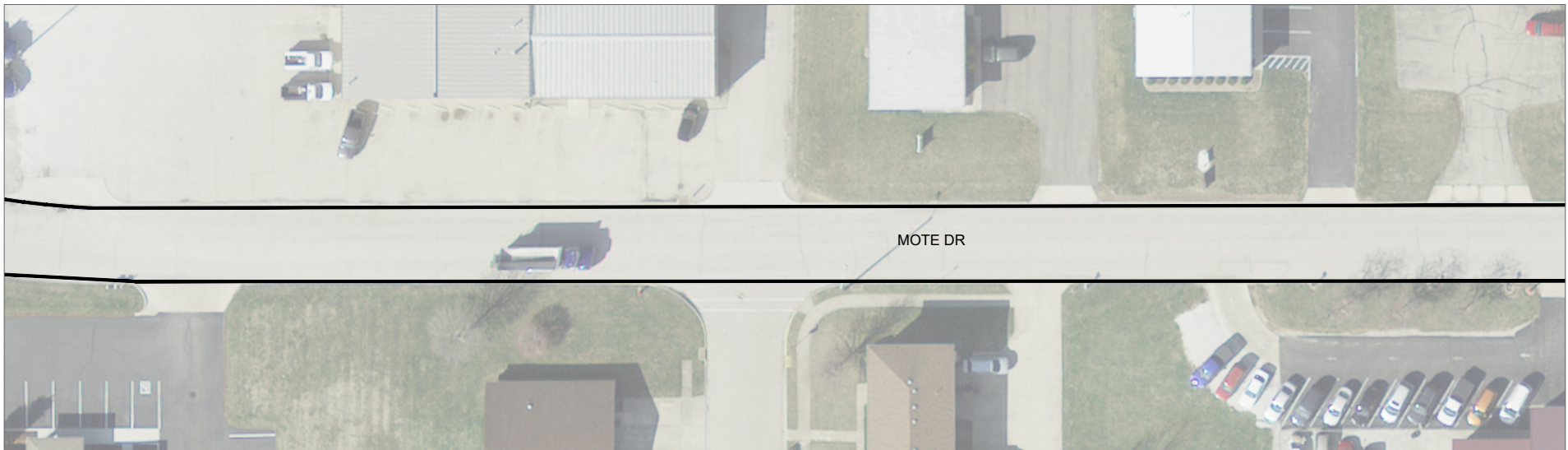
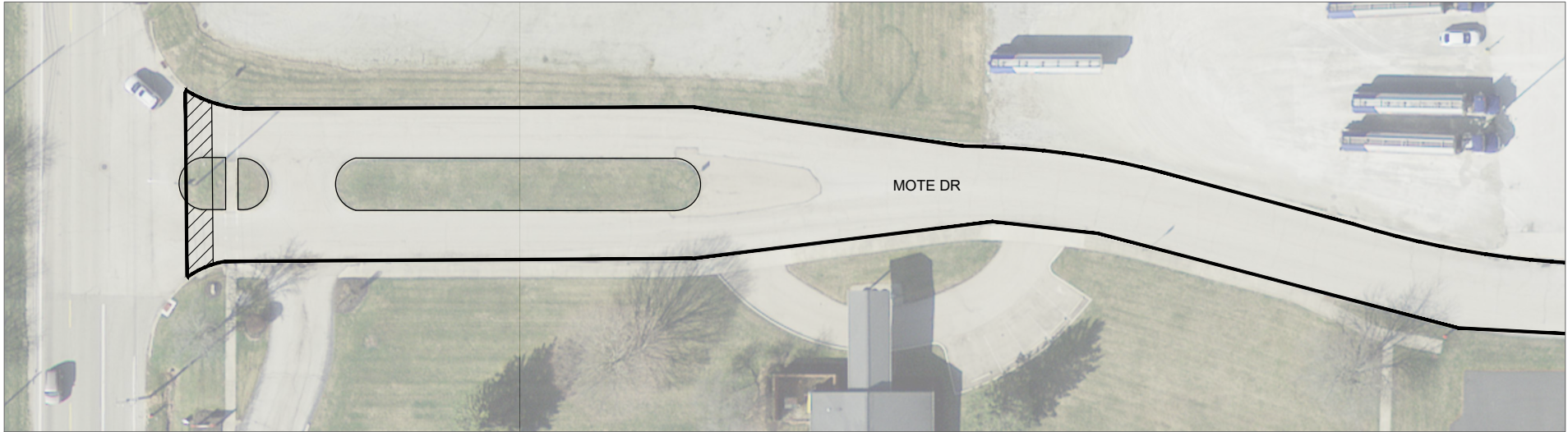
LEGEND

- | | |
|---|--|
| <ul style="list-style-type: none"> ● WATER VALVE TO BE ADJUSTED TO GRADE ● SANITARY MH CASTING TO BE REPLACED ● STORM MH TO BE ADJUSTED TO GRADE | <ul style="list-style-type: none"> MONUMENT BOX TO BE ADJUSTED TO GRADE RESURFACING LIMITS 10' WIDE BUTT JOINT |
|---|--|

WORK DESCRIPTION

- 1 1/2" MILL AT GUTTER EDGE TO 0" AT 7' OFF THE GUTTER EDGE
- CHIP AND SEAL APPLICATION
- 1 1/2" ASPHALT OVERLAY



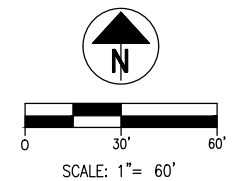


LEGEND

- | | |
|---|---|
| <ul style="list-style-type: none"> ● WATER VALVE TO BE ADJUSTED TO GRADE ● SANITARY MH CASTING TO BE REPLACED ● STORM MH TO BE ADJUSTED TO GRADE | <ul style="list-style-type: none"> ■ MONUMENT BOX TO BE ADJUSTED TO GRADE — RESURFACING LIMITS ▨ 10' WIDE BUTT JOINT |
|---|---|

WORK DESCRIPTION

- 1 1/2" MILL AT GUTTER EDGE TO 0" AT 7' OFF THE GUTTER EDGE
- CHIP AND SEAL APPLICATION
- 1 1/2" ASPHALT OVERLAY



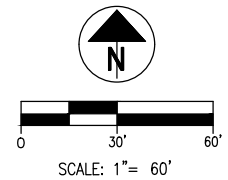


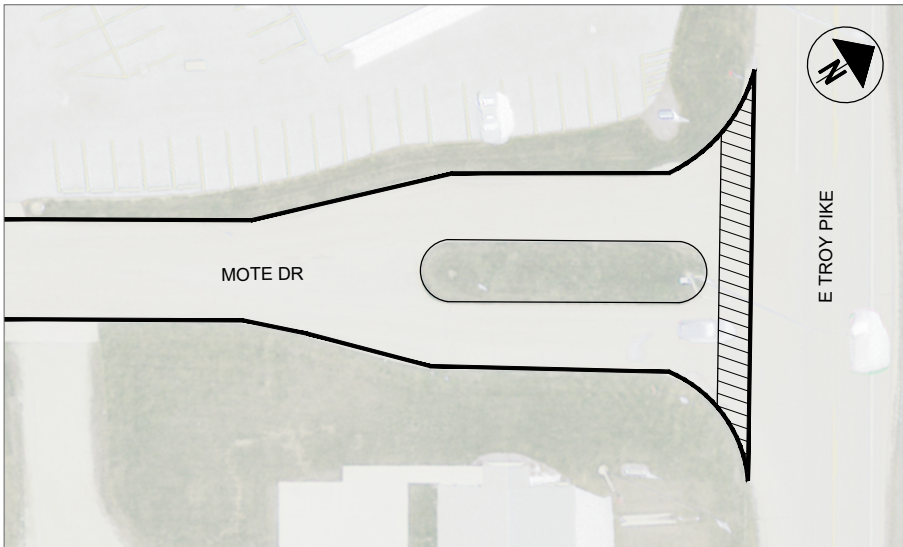
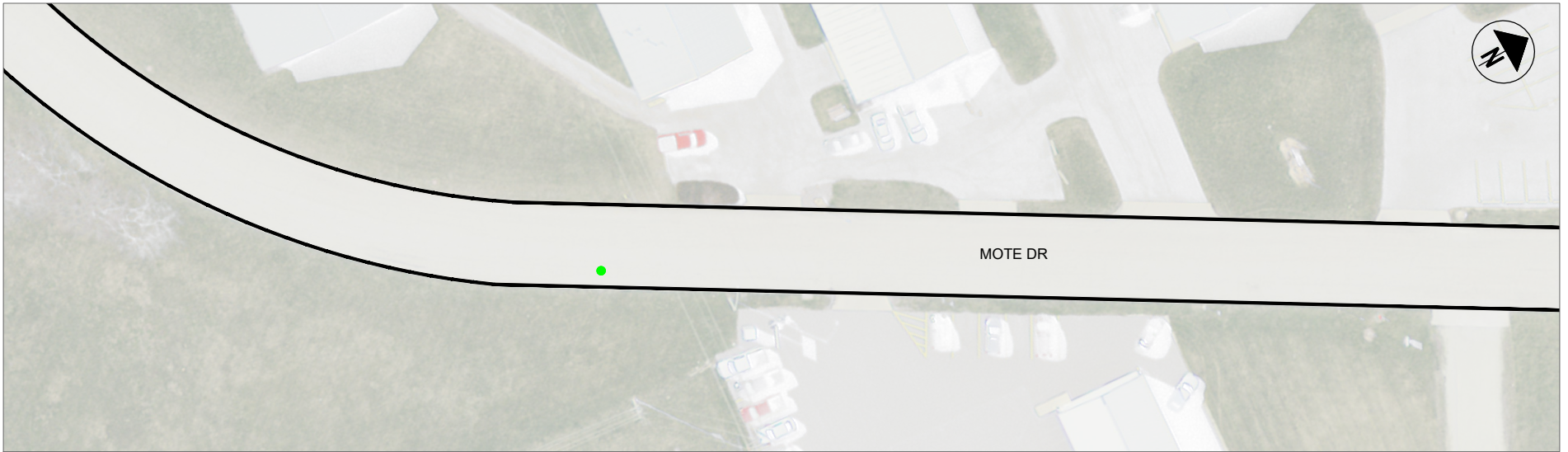
LEGEND

- | | |
|---|---|
| <ul style="list-style-type: none"> ● WATER VALVE TO BE ADJUSTED TO GRADE ● SANITARY MH CASTING TO BE REPLACED ● STORM MH TO BE ADJUSTED TO GRADE | <ul style="list-style-type: none"> ■ MONUMENT BOX TO BE ADJUSTED TO GRADE — RESURFACING LIMITS ▨ 10' WIDE BUTT JOINT |
|---|---|

WORK DESCRIPTION

- 1 1/2" MILL AT GUTTER EDGE TO 0" AT 7' OFF THE GUTTER EDGE
- CHIP AND SEAL APPLICATION
- 1 1/2" ASPHALT OVERLAY



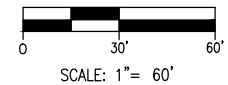


LEGEND

- | | | | |
|---|-------------------------------------|---|--------------------------------------|
| ● | WATER VALVE TO BE ADJUSTED TO GRADE | ■ | MONUMENT BOX TO BE ADJUSTED TO GRADE |
| ● | SANITARY MH CASTING TO BE REPLACED | — | RESURFACING LIMITS |
| ● | STORM MH TO BE ADJUSTED TO GRADE | ▨ | 10' WIDE BUTT JOINT |

WORK DESCRIPTION

- 1 1/2" MILL AT GUTTER EDGE TO 0" AT 7' OFF THE GUTTER EDGE
- CHIP AND SEAL APPLICATION
- 1 1/2" ASPHALT OVERLAY



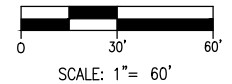


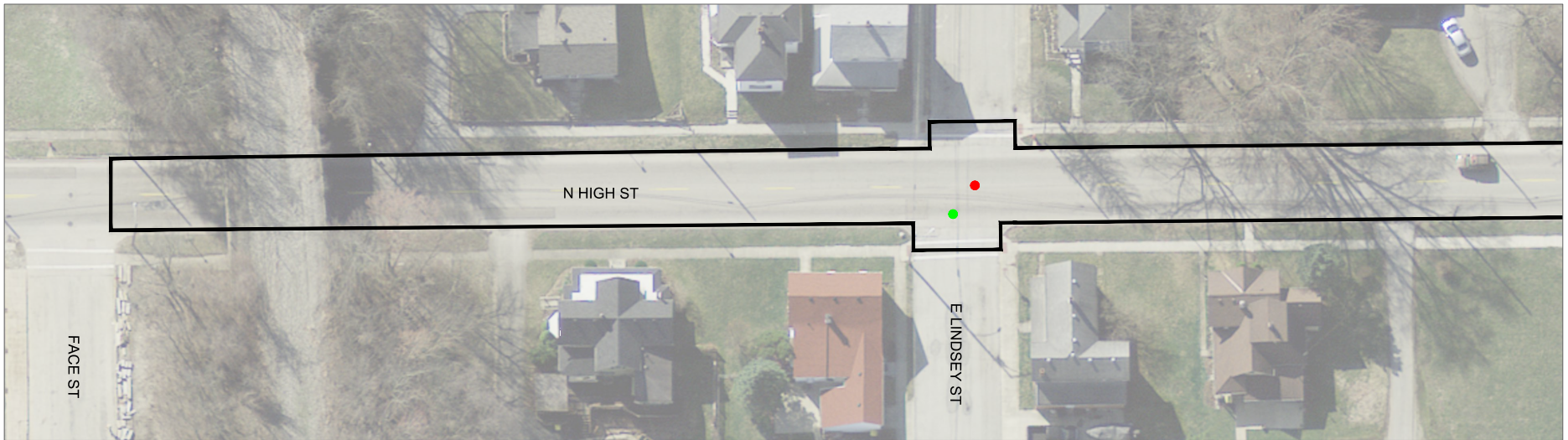
LEGEND

- | | |
|---|--|
| <ul style="list-style-type: none"> ● WATER VALVE TO BE ADJUSTED TO GRADE ● SANITARY MH CASTING TO BE REPLACED ● STORM MH TO BE ADJUSTED TO GRADE | <ul style="list-style-type: none"> MONUMENT BOX TO BE ADJUSTED TO GRADE RESURFACING LIMITS 10' WIDE BUTT JOINT |
|---|--|

WORK DESCRIPTION

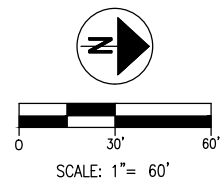
- 1 1/2" MILL AT GUTTER EDGE TO 0" AT 7' OFF THE GUTTER EDGE
- CHIP AND SEAL APPLICATION
- 1 1/2" ASPHALT OVERLAY

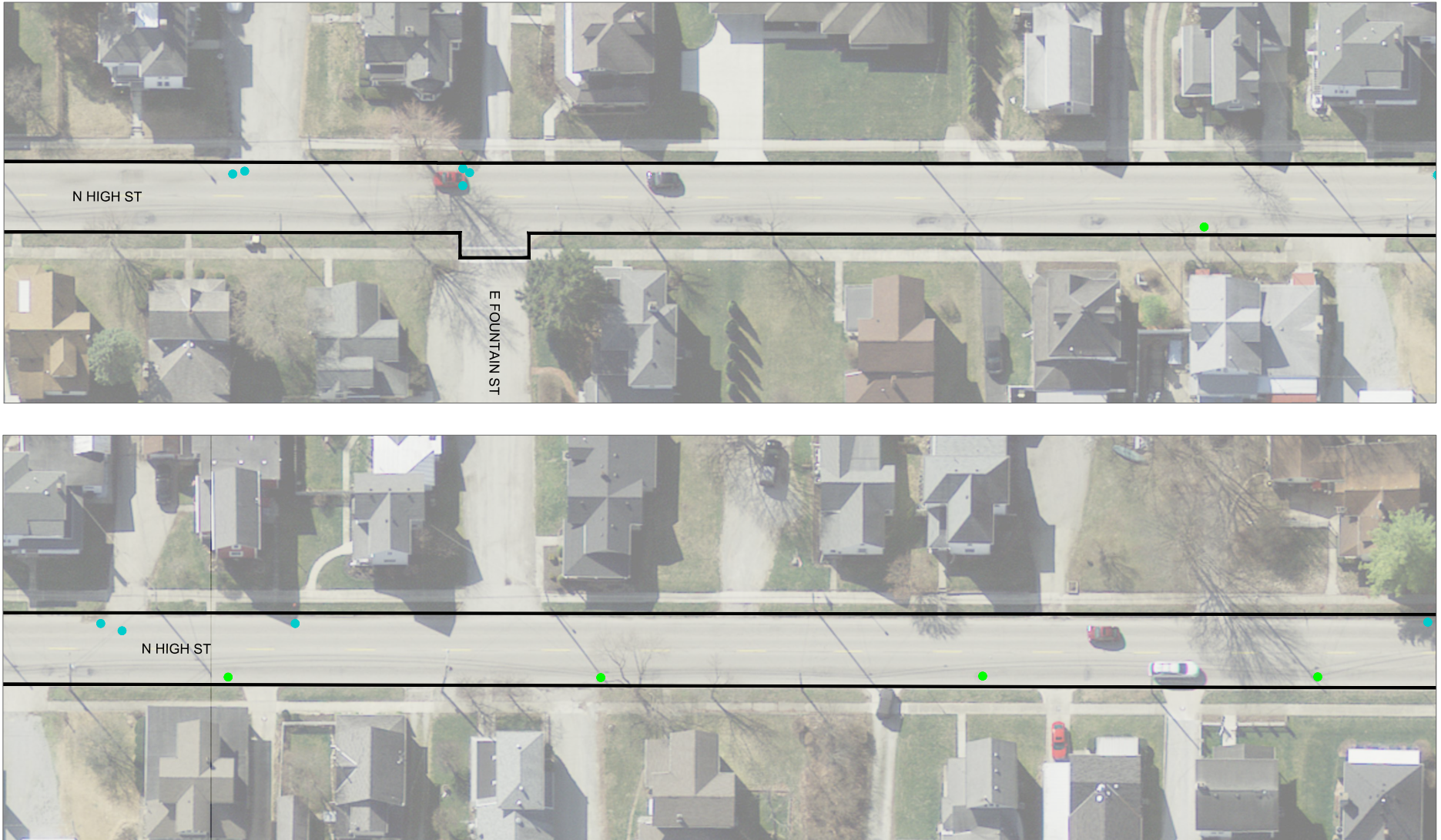




WORK DESCRIPTION

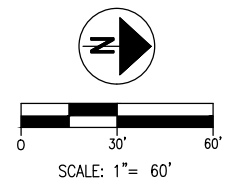
- FINAL WORK PLAN TO BE DETERMINED
- COORDINATION WITH POTENTIAL ODOT RESURFACING AND OPWC FUNDING
- PROJECT WOULD LIKELY INVOLVE
 - CURB REPLACEMENT AND DRIVEWAY REPLACEMENT BETWEEN CURB AND WALK
 - ASPHALT OVERLAY
 - ADA COMPLIANT CURB RAMPS AT ALL INTERSECTIONS
 - SIDEWALK REPLACEMENT COULD BE A SEPARATE PROJECT VIA ASSESSMENTS OR INCLUDED ON THE MAIN PROJECT VIA ASSESSMENTS
 - SANITARY SEWER NEEDS TO BE INVESTIGATED TO SEE IF REPLACEMENT IS NEEDED
 - WATERLINE NEEDS TO BE INVESTIGATED TO SEE IF REPLACEMENT IS NEEDED
 - STORM SEWER NEEDS TO BE INVESTIGATED TO SEE IF REPLACEMENT IS NEEDED

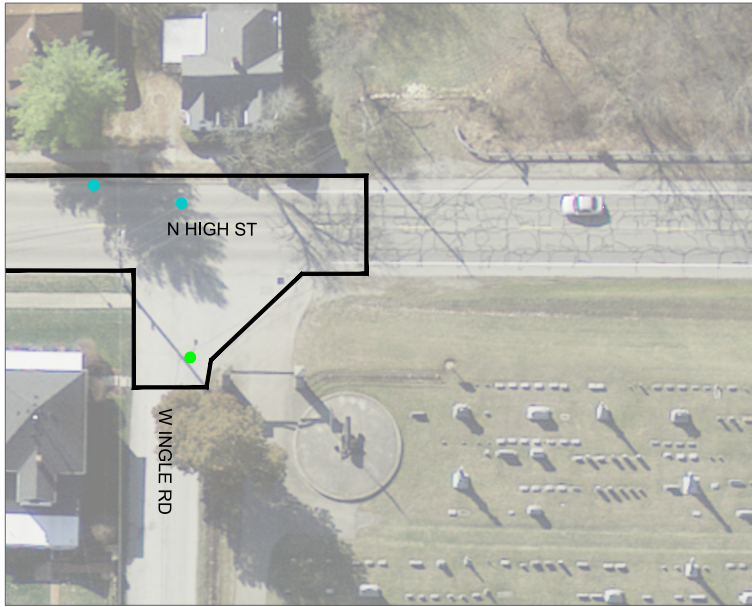




WORK DESCRIPTION

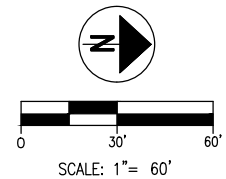
- FINAL WORK PLAN TO BE DETERMINED
- COORDINATION WITH POTENTIAL ODOT RESURFACING AND OPWC FUNDING
- PROJECT WOULD LIKELY INVOLVE
 - CURB REPLACEMENT AND DRIVEWAY REPLACEMENT BETWEEN CURB AND WALK
 - ASPHALT OVERLAY
 - ADA COMPLIANT CURB RAMPS AT ALL INTERSECTIONS
 - SIDEWALK REPLACEMENT COULD BE A SEPARATE PROJECT VIA ASSESSMENTS OR INCLUDED ON THE MAIN PROJECT VIA ASSESSMENTS
 - SANITARY SEWER NEEDS TO BE INVESTIGATED TO SEE IF REPLACEMENT IS NEEDED
 - WATERLINE NEEDS TO BE INVESTIGATED TO SEE IF REPLACEMENT IS NEEDED
 - STORM SEWER NEEDS TO BE INVESTIGATED TO SEE IF REPLACEMENT IS NEEDED

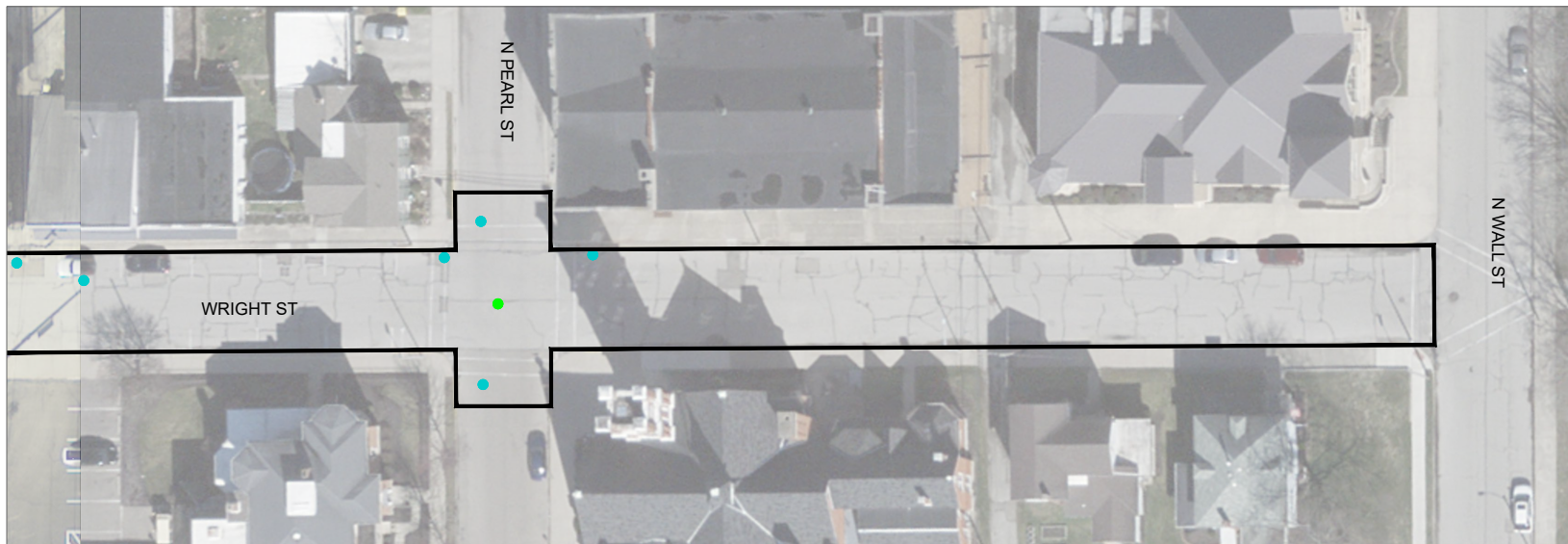




WORK DESCRIPTION

- FINAL WORK PLAN TO BE DETERMINED
- COORDINATION WITH POTENTIAL ODOT RESURFACING AND OPWC FUNDING
- PROJECT WOULD LIKELY INVOLVE
 - CURB REPLACEMENT AND DRIVEWAY REPLACEMENT BETWEEN CURB AND WALK
 - ASPHALT OVERLAY
 - ADA COMPLIANT CURB RAMPS AT ALL INTERSECTIONS
 - SIDEWALK REPLACEMENT COULD BE A SEPARATE PROJECT VIA ASSESSMENTS OR INCLUDED ON THE MAIN PROJECT VIA ASSESSMENTS
 - SANITARY SEWER NEEDS TO BE INVESTIGATED TO SEE IF REPLACEMENT IS NEEDED
 - WATERLINE NEEDS TO BE INVESTIGATED TO SEE IF REPLACEMENT IS NEEDED
 - STORM SEWER NEEDS TO BE INVESTIGATED TO SEE IF REPLACEMENT IS NEEDED





WORK DESCRIPTION

- FINAL WORK PLAN TO BE DETERMINED
- COORDINATION WITH PARK PROJECT
- PROJECT WOULD LIKELY INVOLVE
 - FULL ROADWAY RECONSTRUCTION WITH CURB REPLACEMENT
 - NORTH SIDE – 4’ WIDE SIDEWALK WITH PARKING ALONG STREET
 - SOUTH SIDE – 10’ WIDE SIDEWALK/BIKEPATH WITH NO PARKING ALONG STREET
 - SANITARY SEWER NEEDS TO BE INVESTIGATED TO SEE IF REPLACEMENT IS NEEDED
 - WATERLINE NEEDS TO BE INVESTIGATED TO SEE IF REPLACEMENT IS NEEDED
 - STORM SEWER NEEDS TO BE INVESTIGATED TO SEE IF REPLACEMENT IS NEEDED

